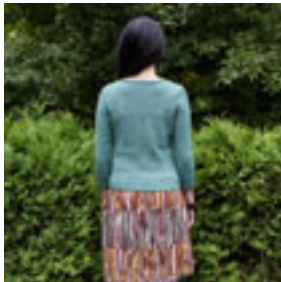


Twist Collective

Last Updated on Sunday, 17 February 2013 12:24

Published on Tuesday, 24 July 2012 22:01



[Buy SMC Select Extra Soft Merino at WEBS](#)

A charming Henley with simply lovely details.

Twist Collective

Last Updated on Sunday, 17 February 2013 12:24

Published on Tuesday, 24 July 2012 22:01

\$7.00 US

add to basket

view basket

Finished measurements:

Bust: 29 ¼ (32 ¼, 35, 38, 41, 43 ¾, 46 ¾, 51, 54, 57)" / 74.5 (82, 89, 96.5, 104, 111, 118.5, 129.5, 137, 145) cm

Length: 19 ¾ (20 ½, 21 ½, 22 ¼, 23, 23 ½, 24, 24 ¼, 25, 25 ¼)" / 50 (52, 54.5, 56.5, 58.5, 59.5, 61, 61.5, 63.5, 64) cm

Shown in size 35" / 89 cm

Intended to be worn with 1–2" / 2.5–5 cm ease.

Yarn:

6 (7, 8, 9, 10, 10, 11, 12, 13, 14) balls SMC Select Extra Soft Merino (142 yd / 130 m per 1 ¾ oz / 50 g ball; 100% Superwash Merino Wool) in #05167 Sea Green

Needles & Notions:

Size 6 US / 4 mm knitting needles

Size 6 US / 4 mm circular needle, 24" / 60 cm long

Stitch markers, stitch holder, tapestry needle, three buttons ½" / 13 mm diameter

Gauge:

22 sts and 30 rows = 4" / 10 cm in

Stockinette stitch

Construction Notes: A ¾-length sleeve pullover with a Henley neckline and simple lace panels on the front and sleeves. It is worked in pieces from the bottom up and sewn together. The lace pattern is given in chart form only.

This is a pdf download, not a mailed pattern. An email with a link to download will be sent to the same email used for your paypal account. These links expire after 3 downloads or 100 hours (whichever comes first).