

Lightly folded lacework under hooded wrap, for slipping by woods on a snowy evening. This crocheted reversible hooded shawl is best as a wraparound from page and folded slightly in the drape after assembly.

24.99 US

add to basket

view basket

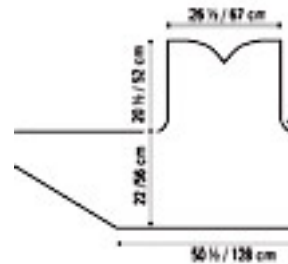
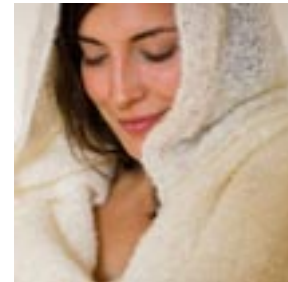
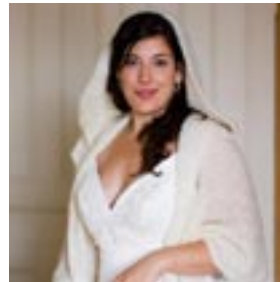
Finished measurements: 22 x 124 1/2 (56 x 316.5 cm)

Yarn: 7 balls of Sweet Medium Weight Baby Mohair (100% mohair, 200 g/70.5 oz per 1 1/2 oz/42 g in basket)

Needles & Notions: Size 10 US (6.5 mm) 30" (80 cm) circular

Gauge: 13 sts and 17 rows = 4" (10 cm) over 50 stitches falling; 14 sts and 19 rows = 4" (10 cm) over 50 stitches falling

Construction Notes: Knit in one piece from yoke to pane



[Buy the Sweet Medium Weight Baby Mohair at Amazon.com!](#)

Twist Collective

Last Updated on Sunday, 17 February 2013 12:24

Published on Monday, 13 October 2008 16:35
