

# Twist Collective

Last Updated on Sunday, 17 February 2013 12:24

Published on Thursday, 12 February 2009 21:43

Like flower petals on the wind, just a hint of lace. What more does a girl need?

22.99 US

add to basket

view basket

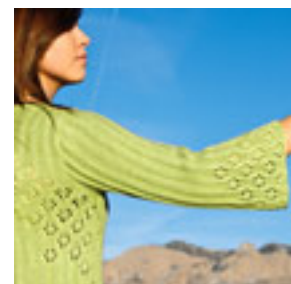
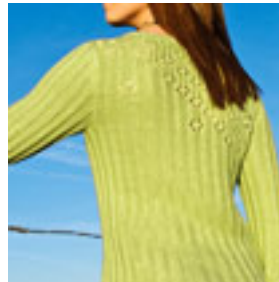
**Construction notes:** Sleeve length and placement of "laciness" front panels are changeable, but the sweater length cannot be altered without compromising the placement of the diagonal lace panel. For a more fitted version, choose a yarn with more elasticity, such as one with some wool content. Instructions for a sleeveless version included 108 in the manual.

**Finished bust measurements:** 29 (32 N, 36 S, 40 L, 43 XL, 47 XLL, 51/7/2.5 (XS, S, M, L, XL, 2XS, 3XS, 4XS, 5XS) cm

**Yarn:** Love from the Victor Novel Collection by SVTC, Inc. (70% bamboo, 30% silk; 98 yds/90 m per 1 to 2 oz/50 gm skein) in K227 Andrew & Sam (light green); with dyes 9 (10, 11, 12, 13, 15, 16) skeins; skein/yard 6 (6, 7, 8, 9, 10, 11) skeins

**Needles & Notions:** Size 6 US/4 mm circular needles, 24-40/750-100 cm long or longer; size 6 US/4 mm circular needles, 10-20/40-80 cm long; or set of four double-pointed needles, size 6 US/3.5 mm circular needles, 10-20/40-80 cm long; or set of four double-pointed needles, 4 ending sleeves (Choose needle lengths based on selected garment size); row counter; stitch holders or waste yarn; tapestry needle

**Gauge:** 21 sts and 28 rows = 4" (10 cm) in St on Size 6 US/4 mm, or size to obtain gauge



[View Love from the Victor Novel Collection by SVTC in Yarn.com](#)

**Twist Collective**

Last Updated on Sunday, 17 February 2013 12:24

Published on Thursday, 12 February 2009 21:43

---