

Twist Collective

Last Updated on Sunday, 17 February 2013 12:24

Published on Thursday, 12 February 2009 21:43

Light and effortless to wear. Defines our shape and makes your needles sing.

22.99 US

add to basket

view basket

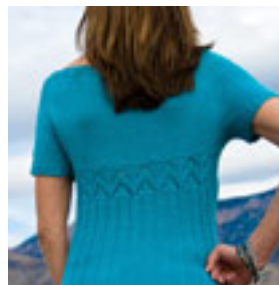
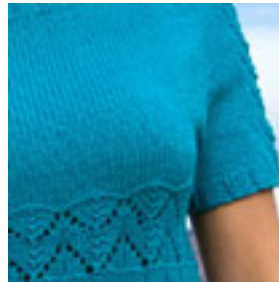
Construction notes: worked seamlessly from the top down

Finished bust measurements: 30 (34, 38, 42, 46, 50, 54) / 76 (96.5, 97, 107, 117, 127, 137) cm

Yarn: 5 (6, 7, 8, 9, 10) balls of Classic Elite Yarns Wool Bam Bam (50% Wool, 50% Bamboo, 118 yds/108 m per 50 g skein) in 1691 Bay Blue

Needles & Notions: Size 5 US/3.75 mm circular needles, 24" (60) cm long; size 5 US/3.75 mm set of five double-pointed needles; eight stitch markers in two colors (four of each); stitch holder or waste yarn; tapestry needle

Gauge: 22 sts and 36 rows = 4" (10 cm) over St or with size 5 US/3.75 mm needles, or size to obtain gauge



[Buy Classic Elite Yarns Wool Bam Bam at Yarn.com](#)