

# Twist Collective

Last Updated on Sunday, 17 February 2013 12:24

Published on Tuesday, 19 May 2009 21:10

Top down construction with bubbles and ribbon cables. Pattern includes detailed charts and options for different lengths.

57-68 US

add to basket

view basket

**Construction Notes:** Worked from the top down using a provisional cast on, in either sweater or tunic length, pattern given in chart form only. Sleeve sleeves are picked up along the armhole and worked down, beginning with short row shaped cap.

**Finished measurements:** Chest 24 (25 1/2, 27 1/2, 29 1/2, 31, 33, 34 1/2) / 61 (65.5, 70, 74.5, 79, 84, 88.5) cm

**Sleeve length:** 12 1/2 (13 1/2, 14 1/2, 16 1/2, 18, 19 1/2) / 32 (34.5, 37, 42, 45.5, 48.5, 49.5) cm

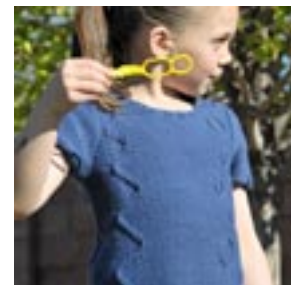
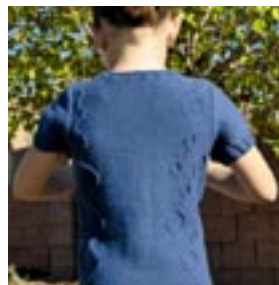
**Tunic length:** 16 (18, 19 1/2, 21 1/2, 23, 25, 27) / 40.5 (45.5, 48.5, 54.5, 58.5, 63.5, 68.5) cm

**Shown in tunic length, size 26 1/2 / 74.5 cm.**

**Yarn:** Vermont Organic Fiber Company O-Wool Classic (150 yds/161 m per 3 1/2 oz / 100 g skein, 100% Certified Organic Merino) in #2011 Gentleness  
**Quantity:** 2 (2, 2, 2, 3, 3, 3 skeins)  
**Tunic:** 2 (2, 3, 4, 4, 4, 6 skeins)

**Needles & Notions:** Size 7 US / 4.5 mm circular needle 24" / 61 cm long, size 7 US / 4.5 mm double pointed needles, size 6 US / 4 mm double point needles, cable needle, stitch markers, two colorless pins, scrap yarn, tapestry needle, crochets hook close to knitting needle size for provisional cast on.

**Gauge:** 18 sts and 25 rows = 4" / 10 cm over Stockinette st



[Buy Vermont Organic Fiber Company O-Wool Classic at Amazon](#)

**Twist Collective**

Last Updated on Sunday, 17 February 2013 12:24

Published on Tuesday, 19 May 2009 21:10

---