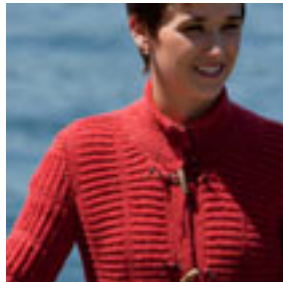


## Twist Collective

Last Updated on Sunday, 17 February 2013 12:24

Published on Friday, 09 July 2010 09:42

---



[Buy Classic Elite Yarns Kumara at WEBS](#)

Think of crisp fall days and boyish style for this cosy yet lightweight jacket. The leather fasteners are easy to

## Twist Collective

Last Updated on Sunday, 17 February 2013 12:24

Published on Friday, 09 July 2010 09:42

---

make, and look superior to commercial findings. This sweater has an unusual construction: the left and right sides are worked side-to-side from the center back to the center front, and then the backs are joined together with a three-needle bind-off. The lofty yarn works in counterpoint to the dense row gauge of the stitch pattern, so that the garment is not heavy

**\$7.00 US**

[add to basket](#)

[view basket](#)

### Finished measurements:

Bust (buttoned): 31 ½ (36, 39 ½, 43 ½, 47 ½, 52)" / 80 (91.5, 100.5, 110.5, 120.5, 132) cm

Shown in size 36" / 91.5 cm

Intended to be worn with 2–3" / 5–7.5 cm ease.

**Yarn:** 11 (12, 13, 15, 16, 18) balls Classic Elite Yarns Kumara (128 yd / 117 m per 1 ¾ oz / 50 g ball; 85% Extra Fine Merino Wool, 15% Baby Camel) in #5758 Mars Red

**Needles & Notions:** Size 8 US / 5 mm circular needle, 32" / 80 cm long

Size I-9 US / 5.5 mm crochet hook, smooth waste yarn in contrasting color, four 1 ½" / 40 mm toggle buttons, 3 yd / 2.75 m of 3/32" / 2.4 mm leather lace, two ?" / 10 mm snaps

**Gauge:** 17 sts and 38 rows = 4" / 10 cm over Fisherman's Rib/Garter Stripe Sequence

**Construction Notes:** Back/Front pieces of sweater are worked side-to-side, starting at the center back and ending at the center front, with armholes worked into the piece. The pieces are joined at the center back using three-needle bind-off. The sleeves are worked from cuff to cap.

*This is a pdf download, not a mailed pattern. An email with a link to download will be sent to the same email used for your paypal account. These links expire after 3 downloads or 100 hours (whichever comes first).*