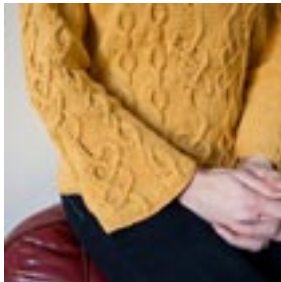


## Twist Collective

Last Updated on Sunday, 17 February 2013 12:24  
Published on Wednesday, 16 March 2011 14:09

---



[Buy Green Mountain Spinnery Cotton Comfort at Green Mountain Spinnery](#)

## Twist Collective

Last Updated on Sunday, 17 February 2013 12:24

Published on Wednesday, 16 March 2011 14:09

---

Gently tilting cables are worked as mirror images of each other. A shaped waist and long, curved sleeves make for a feminine fit. The pattern includes directions for a cardigan variation.

**\$8.00 US**

[add to basket](#)

[view basket](#)

### Finished measurements:

Bust: 32 ½ (35, 38, 41, 44, 46 ½, 50)" / 82.5 (89, 96.5, 104, 112, 118, 127) cm

Length to shoulder: 20 ¾ (21 ¾, 21 ¾, 22 ½, 22 ¾, 23 ½, 24)" / 52.5 (55, 55, 57, 58, 59.5, 61) cm

Shown in size 35" / 89 cm

Intended to fit with 0–2" / 0–5 cm ease.

**Yarn:** 7 (8, 9, 10, 11, 12, 13) skeins Green Mountain Spinnery Cotton Comfort (180 yds / 165 m per 2 oz / 57 g skein; 20% Organic Cotton, 80% Fine Wool) in #6865 Yarrow

### Needles & Notions:

Size 6 US / 4 mm needles

Size 6 US / 4 mm circular needle, 16" / 40 cm long for neckband

Cable needle, stitch markers, four stitch holders, spare needle, six buttons ?" / 16 mm diameter for cardigan version only

**Gauge:** 24 sts and 30 rows = 4" / 10 cm over Stockinette stitch; 28 sts and 30 rows = 4" / 10 cm over Chart A pattern

**Construction Notes:** This sweater is worked flat in pieces and sewn together. Narrow seed stitch borders lead to an all over cable pattern, which is presented in both charts and row by row instructions. The curve at the bottom of the sleeves is shaped with short rows.

*This is a pdf download, not a mailed pattern. An email with a link to download will be sent to the same email used for your paypal account. These links expire after 3 downloads or 100 hours (whichever comes first).*