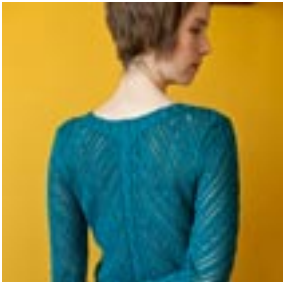


Twist Collective

Last Updated on Sunday, 17 February 2013 12:24
Published on Wednesday, 16 March 2011 14:36



This V-neck pullover with long, set-in sleeves features an all-over diagonal lace pattern outlined with cabled edgings.

Twist Collective

Last Updated on Sunday, 17 February 2013 12:24

Published on Wednesday, 16 March 2011 14:36

\$7.00 US

add to basket

view basket

Finished measurements:

Bust: 31 $\frac{3}{4}$ (34 $\frac{3}{4}$, 37 $\frac{3}{4}$, 40 $\frac{3}{4}$, 43 $\frac{3}{4}$, 47, 50, 53)" / 80.5 (88, 96, 103.5, 111, 119.5, 127, 134.5) cm

Length: 23 $\frac{1}{4}$ (23 $\frac{1}{2}$, 23 $\frac{3}{4}$, 24, 24 $\frac{1}{4}$, 24 $\frac{1}{2}$, 24 $\frac{3}{4}$, 25)" / 59 (59.5, 60.5, 61, 61.5, 62, 63, 63.5) cm

Shown in size 34 $\frac{3}{4}$ " / 88 cm

Intended to be worn with 2–4" / 5–10 cm positive ease.

Yarn: 8 (8, 9, 10, 11, 12, 13, 14) skeins Kollage Yarns $\frac{1}{2}$ N $\frac{1}{2}$ (174 yds / 159 m per 1 $\frac{3}{4}$ oz / 50 g skein; 50% Milk, 50% Wool) in #7209 Teal Blue

Needles & Notions:

Size 5 US / 3.75 mm circular needle 32" / 80 cm long

Size 5 US / 3.75 mm set of four or five double-pointed needles

Cable needle, stitch markers, stitch holder or length of waste yarn, tapestry needle

Gauge: 21 sts and 32 rows = 4" / 10 cm in Chart C pattern; 24 sts and 32 rows = 4" / 10 cm in Stockinette stitch

Construction Notes: The body is knit in the round from the bottom to the armholes, and then divided for front and back. The sleeves are worked separately in the round, and then sewn into place. The mitered neckband is worked from stitches picked up along the neckline. The lace and cable patterns are given as charts only.

This is a pdf download, not a mailed pattern. An email with a link to download will be sent to the same email used for your paypal account. These links expire after 3 downloads or 100 hours (whichever comes first).