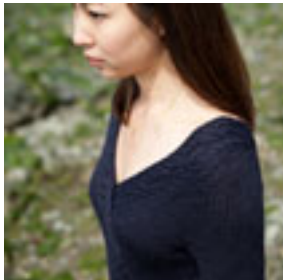


Twist Collective

Last Updated on Sunday, 17 February 2013 12:24

Published on Tuesday, 19 July 2011 23:34



[Buy Catherine Lowe Merino Silk Blend at Catherine Lowe/The Couture Knitting Workshop](#)

Twist Collective

Last Updated on Sunday, 17 February 2013 12:24

Published on Tuesday, 19 July 2011 23:34

Cabled details flow over a mock-wrap pullover.

\$7.00 US

[add to basket](#)

[view basket](#)

Finished measurements:

Bust: 30 ¼ (33 ¾, 36 ½, 39, 42 ¾, 45 ¼, 48, 51 ½, 54 ¼, 57 ¾)" / 77 (86, 92.5, 99.5, 108.5, 115, 122, 131, 137.5, 147) cm

Length: 21 ½ (22 ¼, 22 ¾, 23, 23 ¾, 24, 24 ¼, 24 ½, 24 ¾, 25)" / 54.5 (56.5, 58, 58.5, 60.5, 61, 61.5, 62, 63, 63.5) cm

Sample size: 33 ¾" / 86 cm bust

Intended to be worn with 0–1" / 0–2.5 cm negative ease in the bust.

Yarn: 737 (821, 937, 1025, 1102, 1217, 1299, 1391, 1491, 1587, 1707) yds / 681 (751, 857, 937, 1008, 1113, 1188, 1272, 1363, 1451, 1561) m Catherine Lowe Couture Yarns CL I #6B; 68% superfine merino, 32% silk in Black Violet.

Catherine Lowe Couture yarns are sold by yardage, not by weight or by the skein.

Needles & Notions:

Size 8 US / 5 mm straight or circular needle

Stitch markers, stitch holder (optional), cable needle, tapestry needle

Gauge: 18 sts and 24 rows = 4" / 10 cm in Stockinette stitch

Construction Notes: Twinings is a fitted pullover styled like a wrap sweater, but without the bulk. It is worked flat in pieces from the hem up and then seamed.

In the sample garment shown in the photos, all of the cables twist in the same direction. In the actual pattern charts, the smaller cables twist in the opposite direction from the larger cables. This is a discrepancy between the sample and the pattern that was not seen prior to publication.

This is a pdf download, not a mailed pattern. An email with a link to download will be sent to the same email used for your paypal account. These links expire after 3 downloads or 100 hours (whichever comes first).