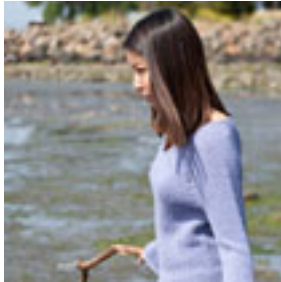


Twist Collective

Last Updated on Sunday, 17 February 2013 12:24

Published on Tuesday, 19 July 2011 23:40



Pare down with simple details and a hint of shimmer.

\$7.00 US

Twist Collective

Last Updated on Sunday, 17 February 2013 12:24

Published on Tuesday, 19 July 2011 23:40

add to basket

-- view basket _

Finished measurements:

Bust: 29 $\frac{3}{4}$ (32, 34 $\frac{1}{4}$, 38 $\frac{1}{2}$, 40 $\frac{1}{2}$, 44 $\frac{3}{4}$, 47, 51 $\frac{1}{4}$, 53 $\frac{1}{4}$, 55 $\frac{1}{2}$)" / 75.5 (81.5, 87, 98, 103, 113.5, 119.5, 130, 135.5, 141) cm

Length: 22 $\frac{1}{4}$ (22 $\frac{1}{4}$, 23, 22 $\frac{3}{4}$, 23, 23, 23 $\frac{3}{4}$, 24, 24 $\frac{3}{4}$, 24 $\frac{1}{2}$)" / 56.5 (56.5, 58.5, 58, 58.5, 58.5, 60.5, 61, 63, 62) cm

Shown in size 34 $\frac{1}{4}$ " / 87 cm

Intended to fit with 1–2" / 2.5–5 cm ease.

Yarn: 8 (8, 9, 10, 10, 11, 12, 13, 14, 14) skeins Kollage Yarns Glisten (91 yds / 83 m per 11 $\frac{3}{4}$ oz / 50 g skein; 75% Alpaca, 20% Silk, 5% Estillina) in #7325 Wisteria

Needles & Notions:

Size 8 US / 5 mm:

- circular needle, 24" / 60 cm long
- circular needle, 16" / 40 cm and 32" / 80 cm long for larger sizes (optional)
- set of four double pointed needles

Locking stitch markers, four in one color (raglan markers), three in another color (contrasting markers), waste yarn, tapestry needle

Gauge: 15 sts and 23 rows = 4" / 10 cm in Stockinette stitch

Construction Notes: The pullover is worked from the top down in one piece to the underarm, where the body and sleeves are divided and worked separately in the round.

Note that the gauge is loose for the weight of the yarn. This is done intentionally to enhance the drape of the garment.

This is a pdf download, not a mailed pattern. An email with a link to download will be sent to the same email used for your paypal account. These links expire after 3 downloads or 100 hours (whichever comes first).