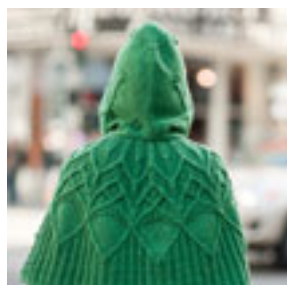
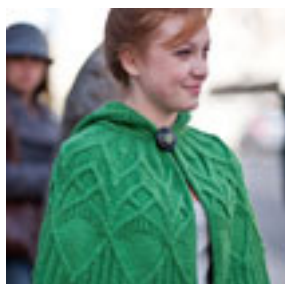


Twist Collective

Last Updated on Sunday, 17 February 2013 12:24
Published on Wednesday, 20 July 2011 00:50



Layer on the cables.

\$7.00 US

Twist Collective

Last Updated on Sunday, 17 February 2013 12:24

Published on Wednesday, 20 July 2011 00:50

add to basket

view basket

Finished measurements:

Cape Circumference at hem: 60 (71 $\frac{3}{4}$, 83 $\frac{1}{2}$)" / 152.5 (182.5, 212.5) cm

Shown in size 60" / 152.5 cm

Intended to be worn with 3–6" / 7.5–15 cm positive ease.

Yarn: 12 (14, 16) skeins Filatura di Crosa Zara Plus (77 yds / 70 m per 1.75 oz / 50 g skein; 100% Superwash Wool) in #441 Kelly Green

Needles & Notions:

Size 9 US / 5.5 mm circular needle, 40" / 100 cm long

Tapestry needle, 11 (12, 13) stitch markers, hook and eye, large button

Gauge: 19.5 sts and 24 rows = 4" / 10 cm worked in hood chart repeat

17 sts and 17 rows = 4" / 10 cm worked

in slipped rib pattern (Rows 75–76 of Body Chart)

Construction Notes: Instructions are in chart form, except for the final shaping and short rows of the hood. Hood is worked from the front edge to center back neck, then stitches are picked up and the cape is worked from the top down. Both integral and applied i-cord edgings are used.

This is a pdf download, not a mailed pattern. An email with a link to download will be sent to the same email used for your paypal account. These links expire after 3 downloads or 100 hours (whichever comes first).