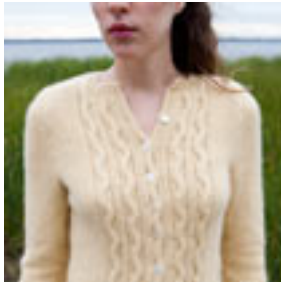


Twist Collective

Last Updated on Sunday, 17 February 2013 12:24
Published on Tuesday, 01 November 2011 14:31



[Buy Classic Elite Yarns Lush at WEBS](#)

Indulge your inner sweater girl.

Twist Collective

Last Updated on Sunday, 17 February 2013 12:24

Published on Tuesday, 01 November 2011 14:31

\$7.00 US

[add to basket](#)

[view basket](#)

Finished measurements:

Bust: 28 ½ (32 ¼, 35, 37 ½, 41 ¼, 44, 44 ¾, 48 ½, 51 ½, 55 ¼)" / 72.5 (82, 89, 95, 105, 112, 113.5, 123, 131, 140.5) cm

Length: 20 ½ (21 ¼, 21 ¾, 22, 22 ¾, 23, 23 ¼, 23 ½, 23 ¾, 24)" / 52 (54, 55, 56, 58, 58.5, 59, 59.5, 60.5, 61) cm

Shown in size 32 ¼" / 82 cm

Intended to be worn with 1–2" / 2.5–5 cm of positive ease in the bust.

Yarn:

7 (8, 8, 9, 10, 11, 11, 12, 13, 14) skeins Classic Elite Yarns Lush (123 yds / 112 m per 1 ¾ oz / 50 g skein; 50% Angora, 50% Wool) in #4412 Banana

Needles & Notions:

Size 8 US / 5 mm needles

Size 9 US / 5.5 mm needles

Size 8 US / 5 mm circular needle, 24" / 60 cm long

Stitch markers, stitch holder, darning needle, cable needle, 11 buttons ½" / 13 mm diameter

Gauge:

18 sts and 26 rows = 4" / 10 cm in Stockinette stitch using smaller needles

Construction Notes: This fitted cardigan is worked in pieces and sewn together. The mirrored cable pattern is presented in chart form only. Edges are finished with twisted ribbing.

This is a pdf download, not a mailed pattern. An email with a link to download will be sent to the same email used for your paypal account. These links expire after 3 downloads or 100 hours (whichever comes first).