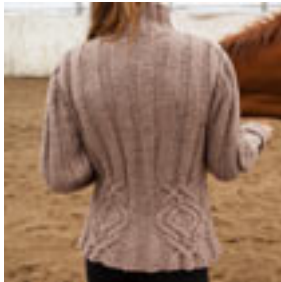
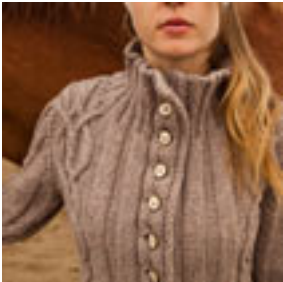


Twist Collective

Last Updated on Sunday, 17 February 2013 12:24
Published on Tuesday, 01 November 2011 14:33



[Buy Imperial Stock Ranch Yarn Columbia
2-Ply at Imperial Stock Ranch](#)

Twist Collective

Last Updated on Sunday, 17 February 2013 12:24

Published on Tuesday, 01 November 2011 14:33

A rich patterning of ribs and cables results in a simply stunning sweater.

\$7.00 US

[add to basket](#)

[view basket](#)

Finished measurements:

Bust circumference (buttoned): 31 (35, 38 ½, 42 ½, 46, 50, 53 ½, 57 ½, 61)" / 78.5 (89, 98, 108, 117, 127, 136, 146, 155) cm

Length: 22 (22 ¾, 23 ½, 23 ½, 23 ¾, 24 ½, 24 ¾, 25 ½, 26)" / 56 (58, 59.5, 59.5, 60.5, 62, 63, 65, 66) cm

Shown in size 35" / 89 cm

Intended to fit with -1 to 1" / -2.5 to 2.5 cm ease.

Yarn:

6 (7, 8, 8, 9, 10, 10, 11, 12) skeins Imperial Stock Ranch Yarn Columbia (220 yds / 201 m per 4 oz / 113 g skein; 100% Wool) in Desert Landscape

Approximately 1233 (1392, 1551, 1710, 1829, 1989, 2148, 2307, 2466) yds / 1127 (1272, 1418, 1563, 1672, 1818, 1963, 2109, 2254) m

Needles & Notions:

Size 9 US / 5.5 mm needles

Size 7 US / 4.5 mm circular needles, at least 16" / 40 cm long

Stitch holders, stitch markers, cable needle (if desired), 11 (12, 12, 12, 12, 13, 13, 13, 13) buttons 1" / 2.5 cm diameter, tapestry needle

Gauge:

17 sts and 21 rows = 4" / 10 cm in k4, p4 ribbing after blocking

28 sts and 21 rows = 4" / 10 cm in Cable Motif after blocking

Construction Notes: This cardigan is worked from the bottom up in pieces and joined at the shoulders with a 3-needle bind-off. Sleeves are picked up at the armholes and worked down, with short rows shaping the sleeve caps. Cable pattern is given in charts only.

This is a pdf download, not a mailed pattern. An email with a link to download will be sent to the same email used for your paypal account. These links expire after 3 downloads or 100 hours (whichever comes first).