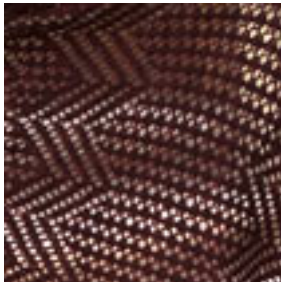


Twist Collective

Last Updated on Sunday, 17 February 2013 12:24

Published on Tuesday, 01 November 2011 14:42



[Buy Sundara Yarn Sport Merino Two at Sundara Yarn](#)

Twist Collective

Last Updated on Sunday, 17 February 2013 12:24

Published on Tuesday, 01 November 2011 14:42

Wrap up in rich color and lovely lace stitches.

\$6.00 US

[add to basket](#)

[view basket](#)

Finished measurements:

Width: 22" / 56 cm

Length: 74" / 188 cm

Yarn:

Three skeins Sundara Yarn Sport Merino Two (338 yds / 309 m per 3 ½ oz / 100 g skein; 100% Superwash Merino Wool) in Black Cherry

Actual yardage required: 1050 yds / 960 m

Needles & Notions:

Size 6 US / 4 mm knitting needles

Tapestry needle

Gauge:

14 ¼ sts and 28 rows = 4" / 10 cm in Chart B pattern

Construction Notes: This rectangular shawl is knit from end to end in a lace pattern that is presented in chart form only.

This is a pdf download, not a mailed pattern. An email with a link to download will be sent to the same email used for your paypal account. These links expire after 3 downloads or 100 hours (whichever comes first).