

With extra long sleeves, deep ribbing and a big bol over collar the sweater will keep you warm and cozy through the winter months.

\$749 US

add to basket

view basket

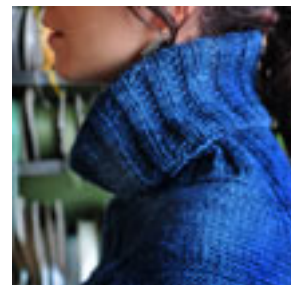
Finished bust measurements: 29 (32 1/2, 36, 39 1/2, 42, 45 1/2, 49 1/2, 53 1/2, 58 1/2, 61 3/4, 72.5 (82.5, 91.5, 98, 106.5, 115.5, 125, 131.5, 140.5, 146, 156) cm

Yarn: 6 (6, 7, 8, 8, 9, 10, 10, 11, 12) skeins Malabrigo Merino Woolen (100% merino, 215 g/4.1 oz) per 2 1/2 (4) R color Aard Profundo #150

Needles & Notions: size 9 US (5.5 mm) 32" (80 cm) and 10" (40 cm) circular, size 8 US (5 mm) 32" (80 cm) and 10" (40 cm) circular, size 9 US (5.5 mm) dpns, size 8 US (5 mm) dpns, stitch markers (at least 10), scrap yarn, tapestry needle

Gauge: 18 sts and 28 rows = 4" (10 cm) in St st on size 8 US (5 mm) needle

Construction Notes: Bottom-up seamless construction



[See Malabrigo Merino Woolen at Ravelry](#)

