

Lightly textured white hooded wrap, for slipping on a rainy evening. This oversized hooded shawl is cut at a sweetheart hem page and lined slightly in the drape after assembly.

24.99 US

add to basket

view basket

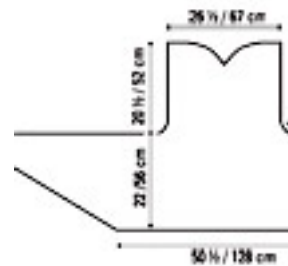
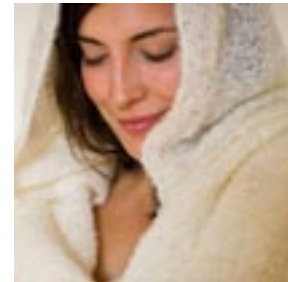
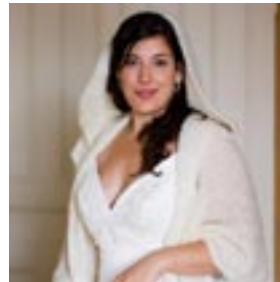
Finished measurements: 22 x 124 1/2 x 256 x 216.5 cm

Yarn: 7 balls of Sweet Medium Weight Baby Merino (100% merino, 200 g/703.5 g per 1.5 x 240 g in ball)

Needles & Notions: Size 10 US (6.5 mm) 30" (80 cm) circular

Shape: 13 sts and 17 rows = 4" (10 cm) over 5x stitches falling; 14 sts and 19 rows = 4" (10 cm) over 5x water falling

Construction Notes: Knit in one piece from yoke to pane



[See the Sweet Medium Weight Baby Merino at Amazon.com](#)

