

Slight ruffling at the button placket and sleeve shaping detail make this henley extra feminine.

\$7.99 US

add to basket

view basket

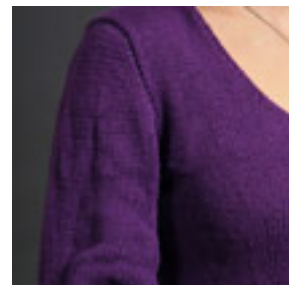
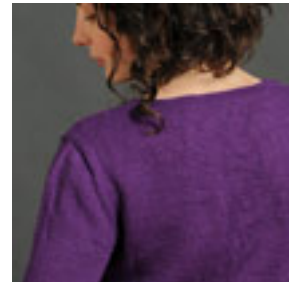
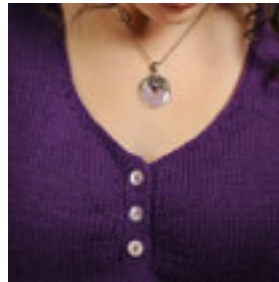
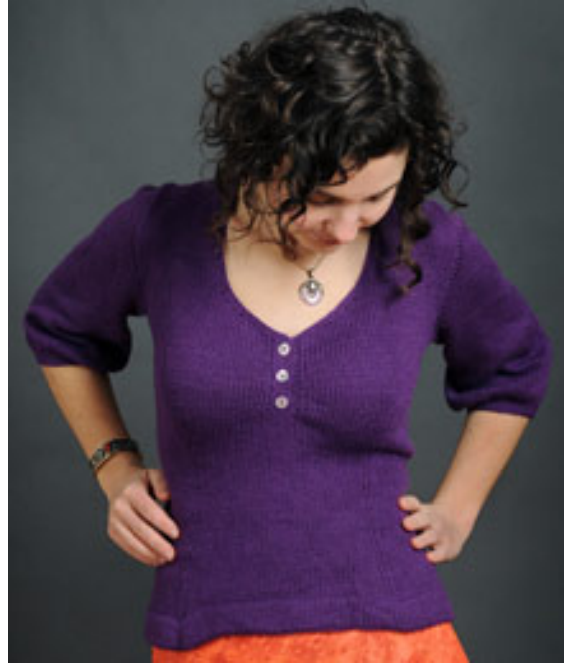
**Construction Notes:** worked in the round, body starts, seamline set-in sleeves, stockinette and brim stitch, single crochet around neckline

**Finished bust measurements:** 32 1/2, 33, 36, 38, 42 1/2, 45, 48, 51, 54 1/2, 57, 60, 62 1/2, 66, 69, 72, 77, 81, 84, 88, 92, 114.5, 122, 126.5, 137.5, 145, 152.5, 160 cm

**Yarn:** 6 (6, 6, 7, 8, 8, 8, 10, 10, 11, 11) skeins Kollege Yarns 100% 100% Merino Wool 174 yds/159 m per 3 1/2 oz (100 g skein) in 7002 Eggplant

**Needles & Notions:** Two sets 5 US/3.75 mm circular needles, 24" (61 cm) long, size 5 US/3.75 mm double pointed needles, size 5 US/3.75 mm crochet hook, three 1/2" (12.7 mm) buttons, stitch markers, stitch holders, two row counters or pen and paper

**Gauge:** 22 sts and 28 1/2 rows = 4" (10 cm) in St or on size 5 US/3.75 mm, or size to obtain gauge



[Buy Kollege Yarns USA or in Europe now](#)

