

Thought out of Candy. Knit from the top down using short rows for crown shaping.

5.68 US

add to basket

view basket

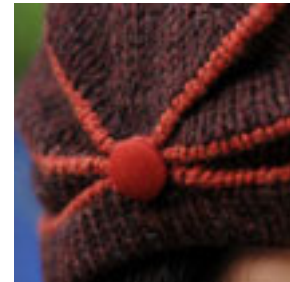
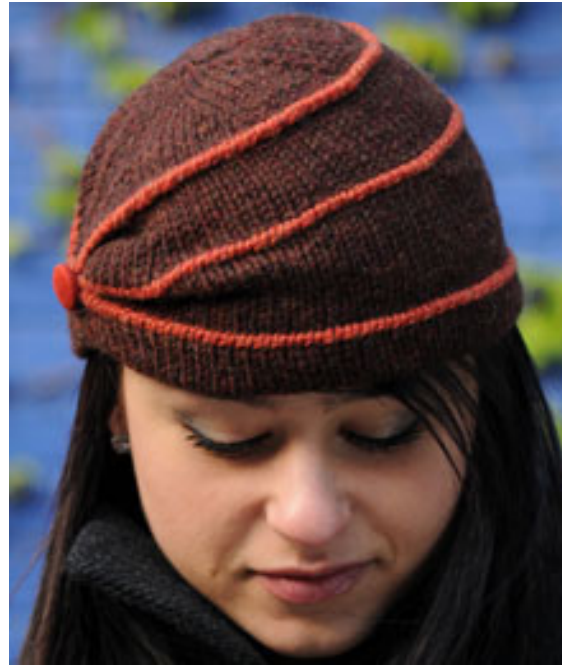
**Finished circumference:** 20 (22 / 24) 156 cm. To fit heads 19-21 (21-23) / 46.5-53.5 (53.5-66.5) cm with 1-1.7 (2.5-7.5) cm of ease. Two options are given for hat depth to allow the knitter to customize the degree of slouch. The shorter hat measures 17 / 38 cm from ear to ear. Longer hat measures 22 / 7.5 cm from ear to ear.

**Yarn:** 22" sample: Cascade Yarns 220 Wool Washables (220 yds / 201 m per 21 oz / 100 g skein; 100% Peruvian Highland Wool; 1 skein in #9408 Brown (MC) 1 skein in #9425 Orange (CC) 22" sample: Berroco Ultra Alpaca (215 yds / 198 m per 21 oz / 100g skein; 50% Alpaca, 50% Wool) 1 skein in #9287 Letter (MC) 1 skein in #9282 Lavender (CC)

**Needles & Notions:** Size 8 US / 5 mm circular needles, 16" / 40 cm long. Size 9 US / 5.5 mm set of five double pointed needles. Adjust needle size if necessary to obtain correct gauge. Eight stitch markers, tapestry needle or hook, decorative button.

**Gauge:** 18 sts and 24 rows = 4" / 10 cm in Stockinette stitch. To save time and to ensure accurate sizing, check gauge.

**Construction Notes:** Knit from the crown to the brim with integral garter gathered into pleats at the side and accented with a button.



[View Complete Yarns 220 Wool Washables at The Yarn and Fiber Company](#)