

Top down uniting cables made as if by weather, with wonderful braided cuffs.

5748 US

add to basket

view basket

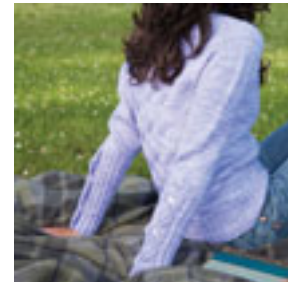
Finished bust measurements: 30 (34, 38, 42, 46), 40%, 52"/76 (86.5, 96.5, 106.5, 116.5, 126.5, 136.5) cm. Sleeve to cuff 34"/86.5 cm.

Yarn: 5 (5, 6, 7, 8, 9) skeins MadelineTosh Tosh Worsted (220 yds / 206 m per 3 1/2 oz / 100 g skein; 100% Superwash Merino Wool in Washable).

Needles & Notions: Size 6 US / 4 mm circular needle 24" / 60 cm long. Size 7 US / 4.5 mm circular needle at least 32" / 80 cm long. Size 7 US / 4.5 mm circular needle 16" / 40 cm long or double pointed needles. Adjust needle size if necessary to obtain correct gauge. Sock needles, cable needle, row counter, tapestry needle, 4 buttons about 9/16" / 1.5 cm diameter.

Gauge: 20 sts and 28 rows = 4" / 10 cm in Stockinette stitch using larger needles. 40-stitch cable panel on front and back measures 8 1/4" / 21 cm wide. To save time and to ensure accurate sizing, check gauge.

Construction Notes: Not seamlessly from the top down. Cable pattern is chanted only. Long cuffs with button closure.



[See MadelineTosh Tosh Worsted at Ravelry](#)