

A dress lace pattern and a lace hemming collar for a sweater with just about as much drama as a girl needs. Please note that lace in the pattern is in chart form only.

DP-0016

add to basket

view basket

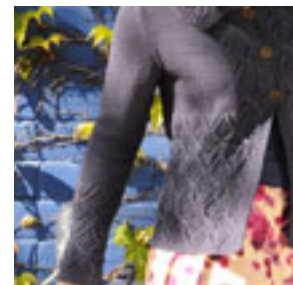
Finished bust measurements: 29 1/2 (34, 38, 42, 46, 50), 54 1/2 (58 1/2, 62 1/2, 66 1/2, 70, 74, 78, 82, 86, 90, 94, 98, 102, 106, 110, 114, 118, 122, 126, 130, 134, 138, 142, 146, 150) cm. Shown in size 34 / 38.5 cm.

Yarn: 12 (13, 14, 15, 16, 17, 18, 21) skeins Kollage Yarns Corralino (105 yds / 96 m per 1 1/2 oz / 50 g skein, 100% Cori) in #0217 Maroon.

Needles & Notions: Size 4 US / 3.5 mm knitting needles. Size 3 US / 2.5 mm knitting needles. Adjust needle size if necessary to obtain correct gauge. Size 6-4 / 3.5 mm crochet hook, tapestry needle, cable needle, stitch markers, 3 buttons 1 1/2 cm diameter.

Gauge: 22 sts and 30 rows = 4 1/2 in in Doublebed stitch or using larger needles. 23 sts and 32 rows = 4 1/2 in in Loretta Lace pattern using larger needles. To save time and to ensure accurate sizing, check gauge.

Construction Note: Knit in pieces. Lace and cable pattern is charted only - see how-to video instructions.



[See Online Content & Comments](#)

